



Overmonnow Specialist Resource Base

Overmonnow SRB is part of Overmonnow Primary School. The SRB is known as 'Dosbarth Barri'. The SRB can accommodate up to 24 pupils. There are 3 smaller class groups within the SRB. The staff team are very well established and skilled in supporting children who have complex additional learning needs including) Autism and Severe Learning Difficulties (SLD). The SRB offers an environment and curriculum tailored to the needs of pupils who require a different approach to their learning and the use of specialist approaches. The pupils in the SRB are placed by the Local Authority and have Individual Development Plans. The SRB is located on a green, leafy site surrounded by trees. It has a designated, secure play area.



The school was last inspected in November 2018. The outcome of the inspection was that the performance of the school was 'good' across all aspects inspected. The inspection report indicated that:

- *The provision for pupils with additional learning needs, both in mainstream classes and in the special needs resource base, is strong.*
- *Most pupils in the special needs resource base make good progress, often from very low starting points.*
- *In the special needs resource base, pupils have appropriate independent learning skills. Pupils with additional speech and language needs use pictures successfully to communicate so that adults can respond and ensure their wellbeing.*
- *Staff in the special needs resource base use areas such as the sensory light room effectively to support the learning and wellbeing of pupils with specific needs.*
- *Generally, there is a good degree of challenge for pupils of all abilities, including individualised learning for pupils in the special needs resource base.*
- *There are beneficial partnerships with the local and wider community.*

What we offer

- Personal care suite for pupils with intimate care needs



What we offer

- Regular access to a specialist teacher and specialist teaching assistants
- Provision of a progressive curriculum, with small step teaching, where pupils acquire a breath of skills essential for their development
- Learning delivered through meaningful contexts and adapted to meet individual pupils' needs and interests
- Flexible access to individual, small group and whole class teaching as appropriate, including integration into mainstream classes
- A structured teaching approach, based upon principles of TEACCH, to provide a calm, orderly and predictable learning environment and a high level of routine to increase familiarity



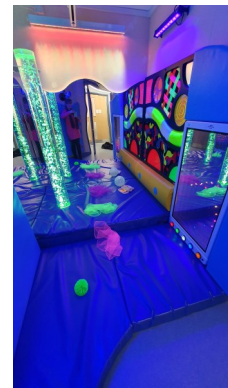
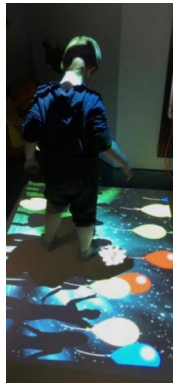
- A total communication approach including use of objects, photos or symbols of reference, signing and ICT



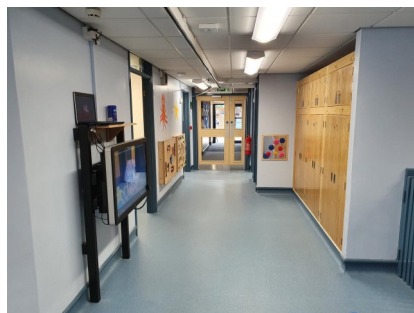
- Following guidance from the Speech and Language Therapy Service, access to low / high tech Augmentative and Alternative Communication (AAC) systems as appropriate, such as use of Gestalt Language Processing (GLP) Core Boards
- Multi-agency working – regular liaison and meetings with professionals in health and social care.
- Staff trained in health and safety aspects such as Team Teach, Epilepsy and manual handling

What we offer

- Language and communication targets integrated into daily planning
- Sessions to develop natural and spontaneous communication through the use of visually based and highly motivating activities
- Attention Autism
- Access to 'Tacpac' sessions; a sensory communication resource using touch and music to help communication and social skills
- An emphasis upon stress and anxiety management for pupils
- Access to Rebound Therapy and Flexi Bounce Therapy by trained staff, to provide therapeutic exercise, as appropriate
- Pupils' individual sensory profiles planned for, to make adaptations to the sensory environment where possible and provide opportunities for a 'sensory diet', for example, through use of our sensory spaces



- Weekly visits from a music therapist
- Weekly swimming sessions at Monmouth Leisure Centre and weekly horse riding sessions through 'Riding for the Disabled' in Hereford
- Links with the local community
- Access to a safe and secure environment at unstructured times
- Hoist system for pupils with mobility needs



Outreach

We are able to provide advice and training on complex additional learning needs, to Monmouthshire schools, through OASIS.

Meeting the Needs

'Meeting the Needs' is a registered charity and was formed in 1999 to benefit the pupils in Overmonnow Special Needs Resource Base. Having charitable status allows us to access areas of funding only available to groups that are recognised by the Charities Commission. Over the years we have received tremendous support from many groups, some nationally and others within our local community.

It is the aim of the charity to support the education and to enhance the quality of life for pupils with additional educational needs. We are ceaselessly fundraising as we strive to improve and better the lives of our pupils in many small but significant ways; therefore we pledge to work tirelessly to provide the pupils with a good quality of life.

Charity No. 1074754

Contact

Overmonnow Specialist Resource Base

Overmonnow Primary School

Rockfield Road

Monmouth

Monmouthshire

NP25 5BA

Tel. 01600 713458

overmonnowprimary@monmouthshire.gov.uk